

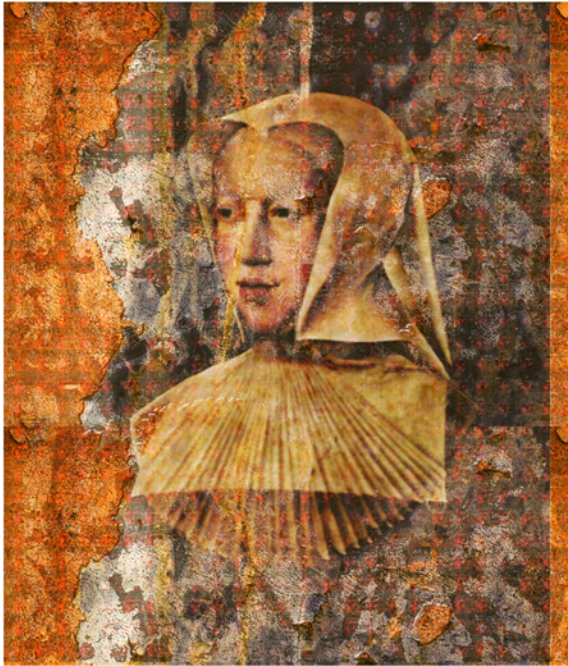
# Walton Mendelson



*Selected Images 1982-2009*

[www.I2onI4.com](http://www.I2onI4.com) ♦ [www.wm-arts.com](http://www.wm-arts.com)  
[walton@I2onI4.com](mailto:walton@I2onI4.com)

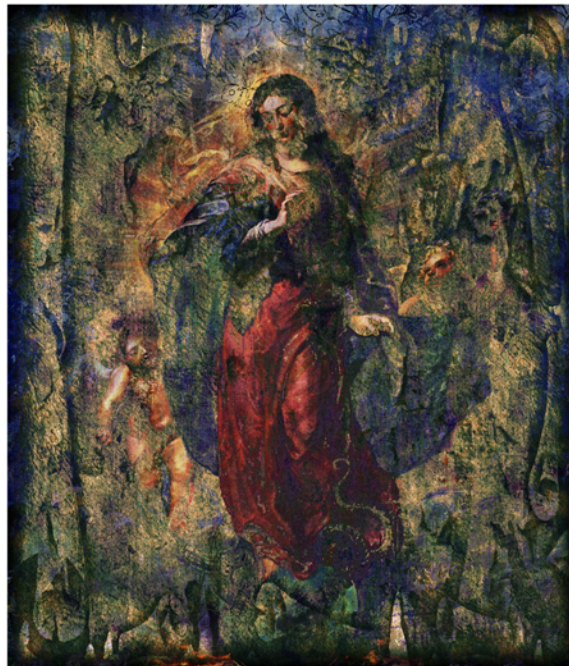




*Margarette*  
(21.25 x 24.75)



*Every Conviction*  
(21.25 x 24.75)



*Miriam*  
(21.25 x 24.75)





*Mother of Egypt*  
(20.0 x 25.5)



*Psyche & Usher*  
(20.0 x 25.5)



*Madonna*  
(20.0 x 25.5)



*Patonce*  
(20.0 X 25.5)



*Homeless*  
(20.0 x 25.5)



*Chalice*  
(20.0 x 25.5)



*Round Hill*  
(17.8 x 25.5)



*Pines*  
(18.2 x 25.5)



*Kimono*  
(19.4 x 26.0)



*Study One*  
(19.6 x 25.5)



*Heros*  
(19.3 x 26.0)



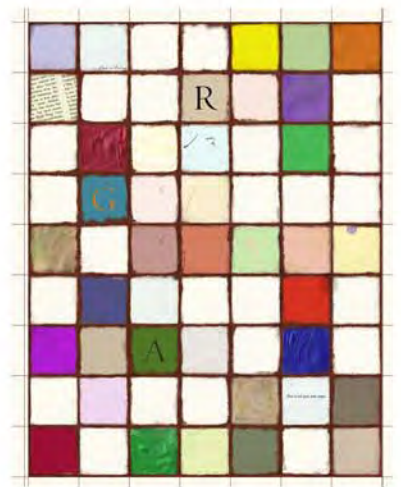
*Typhon*  
(20.0 x 25.5)



*Zorand*  
(18.8 x 26.0)



*Tympan*  
(20.0 x 25.5)



*Gray*  
(20.2 x 25.5)



*Modern*  
(17.8 x 25.5)



*Music Sweetens Heaven's Echo*  
(17.9 x 25.5)



*Deserted Stairs*  
(17.8 x 25.5)





*Sarabande*  
(25.5 x 20.0)



*Courante*  
(25.5 x 20.0)



*Still Life 1*  
(20.0 x 15.6)



*Still Life 2*  
(20.0 x 15.6)



*Still Life 3*  
(20.0 x 14.3)



*Still Life 4*  
(20.0 x 14.3)



*Saturnalia*  
(25.5 x 20.0)



*Gigue*  
(25.5 x 20.0)



*Golden Age*  
(20.0 x 9.5)



*Too Late*  
(25.5 x 16.7)



*The Return of Arthur*  
(20.0 X 12.7)



*Plutus Contemplates Abundance*  
(25.5 x 17.0)



*~ Taking the Waters*  
(25.5 x 20.0)



*One Man's Pass*  
(18.6 x 14.2)



*Isles of Melancholy*  
(20.0 x 20.0)



*The Parting*  
(25.5 x 19.1)





*Darwin Receives Divine Revelation*  
(18.0 x 12.0)



*Antiquity Survives*  
(25.5 x 17.0)



*Ge*  
(26.0 x 20.0)



*Chiracauhas*  
(25.5 x 20.0)



*Sheep May Safely Graze*  
(25.5 x 15.4)



*Humbolt*  
(25.5 x 18.1)



*Elusive Dadists*  
(25.5 x 20.0)



*Majest Too Soon Forgotten*  
(26.0 x 18.2)





*The Faithful Apostles*  
(36.0 x 20.0)



*Monument Valley*  
(36.0 x 20.0)



*George Severn: Closed Gates*  
(19.7 x 14.9)



*The Sound*  
(26.0 x 9.2)



*Study in Gray #1*  
(18.7 x 25.5)



*Study in Gray #2*  
(17.4 x 25.5)



*Jerome*  
(18.2 x 25.5)



*Peninsula*  
(24.9 x 16.8)



*Winter Stream*  
(25.5 x 15.9)



*Scheherazade*  
(25.5 x 16.9)



*Manzanita*  
(25.5 x 20.1)



*Prodigal*  
(25.5 x 19.8)



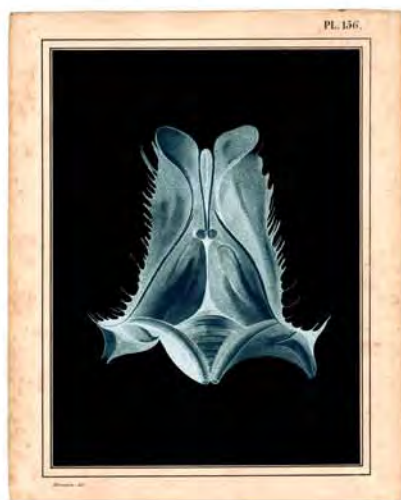


Plate 156  
(15.0 x 18.6)



Plate 44  
(15.0 x 19.22)



Plate 7  
(15.0 x 18.5)



Plate 87  
(15.0 x 19.6)

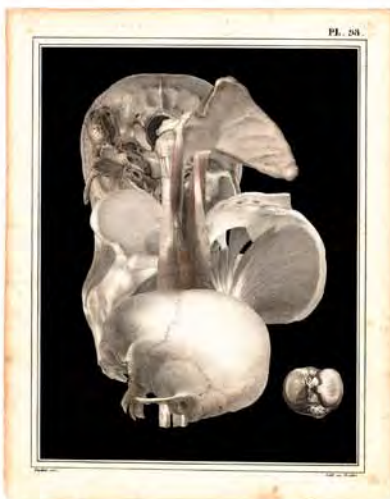


Plate 98  
(15.0 x 18.9)



Plate 87B  
(15.0 x 18.6)



Plate 170  
(15.0 x 18.8)

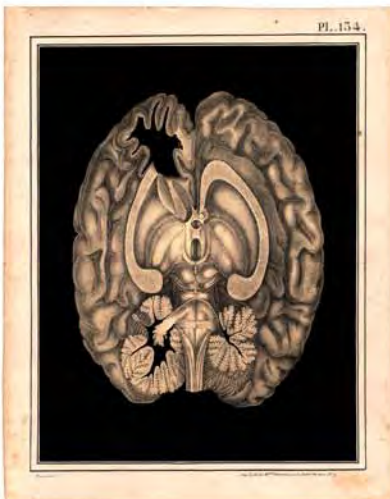


Plate 134  
(15.0 x 18.9)

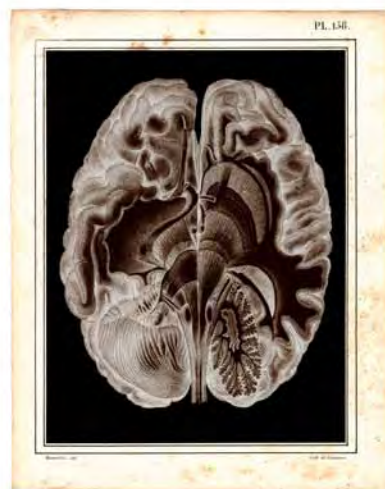
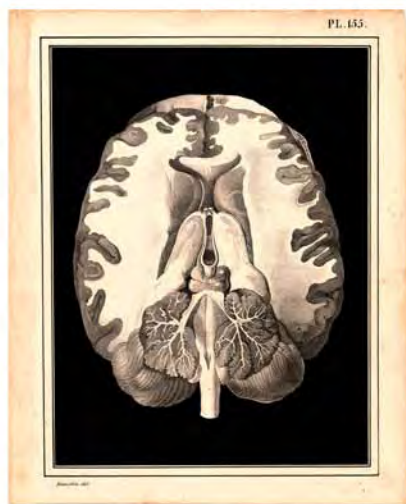
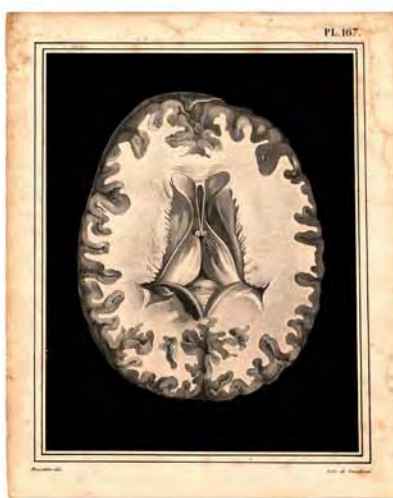


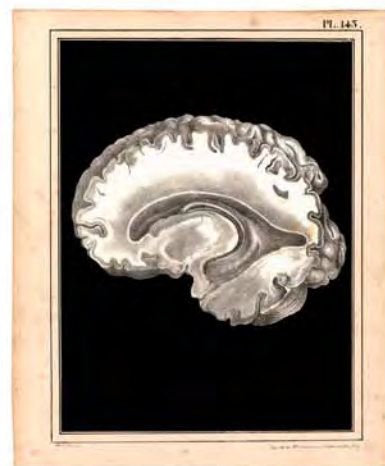
Plate 158  
(15.0 x 18.8)



*Plate 155*  
(15.5 x 18.5)



*Plate 15*  
(15.0 x 18.5)



*Plate 143*  
(15.0 x 18.0)



*Downy Thorn Apple*  
(15.0 x 18.6)



*Lilly*  
(15.0 x 18.8)



*Thistle*  
(15.0 x 19.2)



*Four O'clock*  
(15.0 x 18.4)



*Narcissus*  
(15.0 x 18.4)



*Apples*  
(15.0 x 18.5)





*Otto Roeper: Selected Prints*  
(14.9 x 19.7)



*Otto Roeper: Aesthetical Analects*  
(11.0 x 17.0)



*The Koth'seen: Lazz in Zorand*  
(14.3 x 9.3)



*Gramineae*  
(15.0 x 18.7)



*Droseraceae*  
(15.0 x 18.7)



*Iridaceae*  
(15.0 x 19.2)



*Rosaceae*  
(15.5 x 18.6)

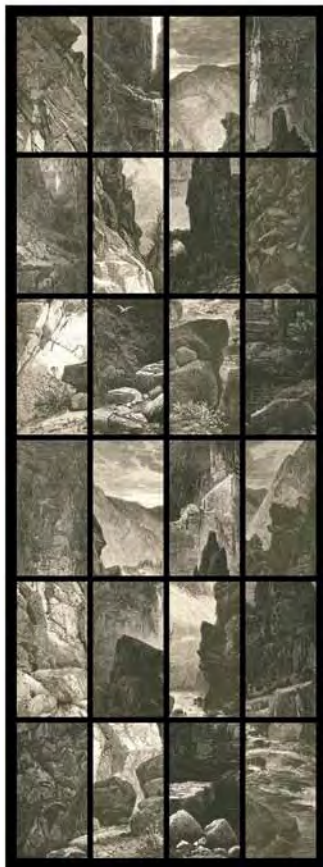


*Liliaceae*  
(15.0 x 19.3)

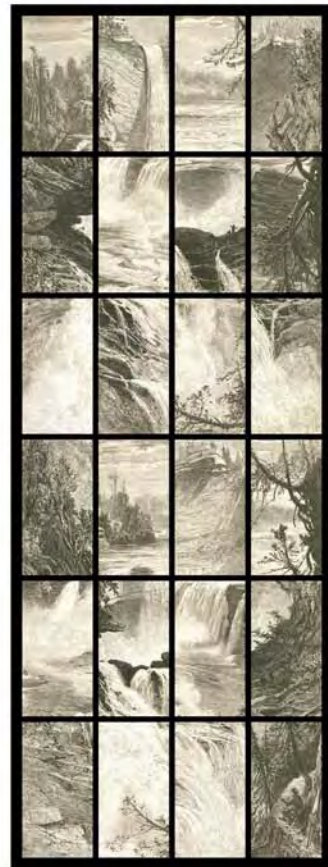




*Cañon*  
(20.0 x 53.7)



*Devil's Gate*  
(20.0 x 53.7)



*Iguasso*  
(20.0 x 53.7)



*Orta*  
(20.0 x 53.7)



*Seaside*  
(20.0 x 53.7)

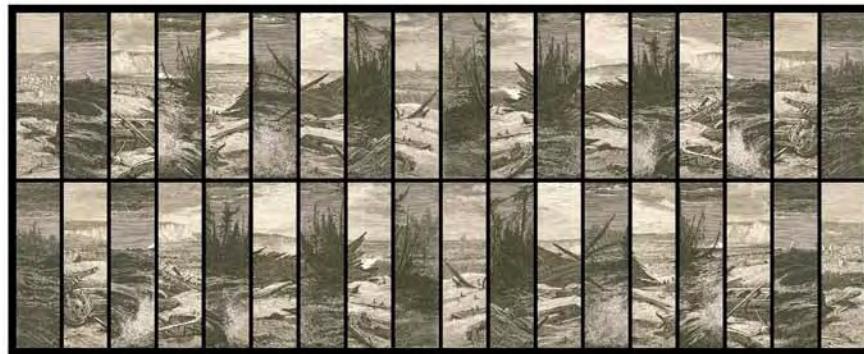


*Yosemite*  
(20.0 x 53.7)





*Ottoman*  
(37.0 X 20.0)



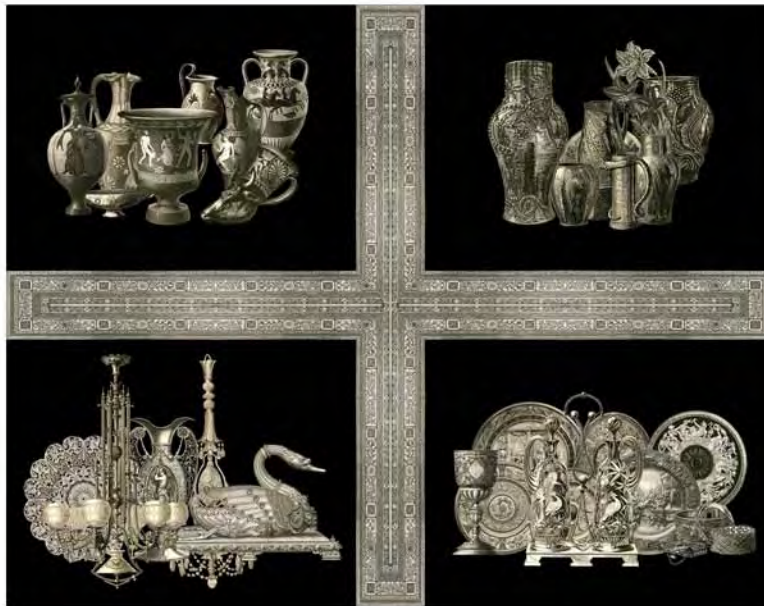
*Coastlines*  
(40.0 X 16.3)



*Nicholas Spence: The Sacred & The Profane*  
(27.8 X 20.0)



*Bonaventure Cemetary*  
(13.0 X 13.0)

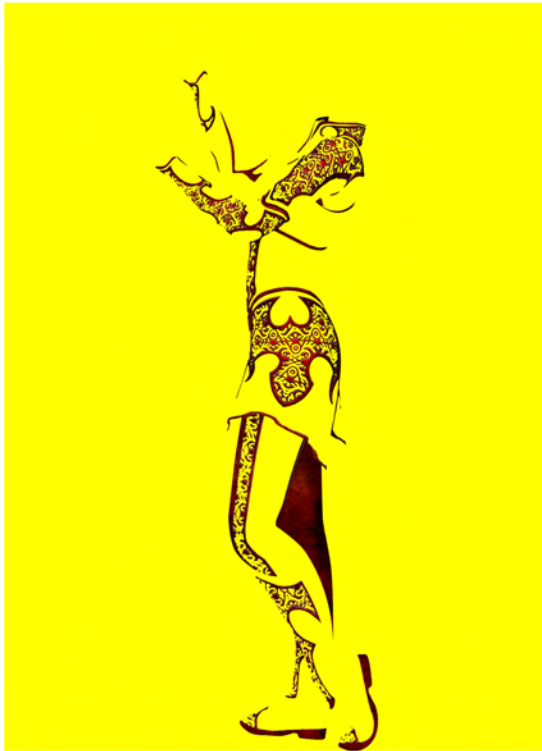


*Collection*  
(25.5 X 19.9)



*Paris before the Fire*  
(25.5 X 19.9)





*The Soreseress*  
(20.0 x 25.5)



*Lazz arrives in Zorand*  
(18.75 x 25.5)



*Mí Corazon se Desato en el Viento*  
(31.255 x 16.0)



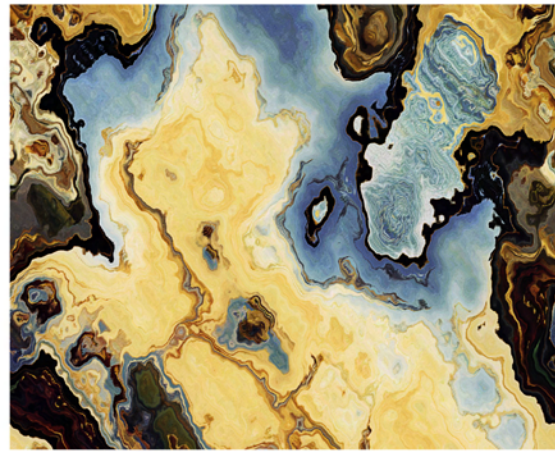
*The Ten Virtues*  
(13.0 x 10.5)



*Turkish Exhibition*  
(11.75 x 17.75)



*Upon His Throne Let the Gods ward*  
(19.5 x 17.0)



*Elevations*  
(21.25 x 24.75)





All images are printed by the artist, and are UltraGiclée Fine Art Prints: using Epson UltraSmooth or Smooth Fine Art papers, with UltraChrome inks, and printed with the Epson Stylus Pro 7600 (the smaller version of the 9600). Prints are coated front and back with a UV inhibiting acrylic spray. All print information—title, image creation and print dates, print number, and signature—are written in pencil on the verso. Prints are shipped flat in AirFloat reinforced print pads. Print sizes given in this brochure are optimum sizes.

From the Museum of Fine Arts, Boston (<http://www.mfa.org/shop/fap-about.html>):

After extensive testing on various large format color reproduction systems, the MFA has chosen the Epson Stylus Pro 9600 ink-jet printer for reproductions of works in our collections. The Epson Stylus Pro 9600 can print up to 44" wide and uses long lasting pigment inks. These pigments are capable of faithfully reproducing even the subtlest fine art. They also have the advantage of being one of the most archival ink sets currently available. Independent tests done by Wilhelm Imaging Research, the leading testing lab for the longevity of color printing materials, predicts that prints made with the Epson Stylus Pro 9600 Ultrachrome pigment inks, framed with UV Plexiglas under normal indoor lighting conditions, will last over 100 years before any noticeable fading occurs. The inks used for printing posters and the dye based inks used in the Iris ink-jet printers will not last nearly as long. Also, while it is not recommended that any fine art color print be exposed to ultra violet light for extended periods of time, the Epson pigments are far more resistant to UV light than dye based inks.

The MFA's Archival Replicas are reproduced on Epson UltraSmooth Fine Art paper, a 500g/m<sup>2</sup>, 100% rag, acid-free archival ink-jet paper. This paper has an ink-jet coating that is engineered to give the highest resolution and color saturation achievable with current digital printing technology.