

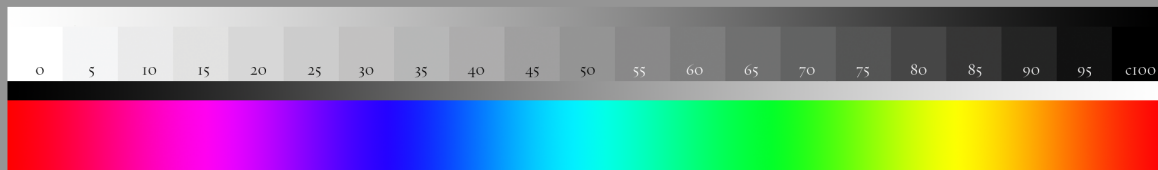
Color test reference pictures and miscellanea from:

CS Digital:

A Practical Guide to CS Digital Possibilities

Walton Mendelson

2011
One-Off Press



From *CS Digital*, © Walton Mendelson, One-Off Press

R94 G28 B13

Dark Skin

R241 G148 B108

Light Skin

R97 G119 B171

Blue Sky

R 90 G103 B39

Foliage

R164 G131 B196

Blue Flower

R140 G253 B153

Bluish Green

R255 G116 B21

Orange

R7 G47 B122

Purplish Blue

R222 G29 B42

Moderate Red

R 69 G0 B68

Purple

R187 G255 B19

Yellow Green

R255 G142 B0

Orange Yellow

R0 G0 B142

Blue

R64 G173 B38

Green

R203 G0 B0

Red

R255 G217 B0

Yellow

R207 G3 B124

Magenta

R0 G148 B189

Cyan

R255 G255 B255

White

R249 G249 B249

5% Gray

R180 G180 B180

35% Gray

R117 G117 B117

65% Gray

R53 G53 B53

85% Gray

R0 G0 B0

Black

RGB References from Macbeth reference chart sRGB



Above, left to right

Top: *Ships*, by Stanko Mravljak, *Little Girl*, Noam Armonn, *Cute Little Girl*, Anna Karwowska
 Middle: *Groom and Bride*, Sergiy Koshevarov, *Mother & Son*, Iofoto, *Korean Baby*, Gina Smith

Bottom: *Flamingo*, Dace Pjanova, *Punk Girl*, Thomas Reiner, *Old House*, Ramon Grosso Dolare

Opposite:

Little Boy Watching the Rain through the Window, Noam Armon

Previous pictures:

Print the two pages to test both your printer and your monitor as compared to these images printed on pages 44-45 and 48-49 of *CS Digital*. The gray background is a neutral 50% gray.

See pages 93-94 for more information about using these images as a test.

The reference picture, with the Macbeth ColorChecker, in the download is a TIFF file to preserve the RGB color values. These RGB values are included to give you an absolute reference. There are many variations on this chart that have different RGB values. For additional information:

Danny Pascale, Bable Color: <http://www.babelcolor.com/download/RGB%20Coordinates%20of%20the%20Macbeth%20ColorChecker.pdf> for an invaluable overview of the ColorChecker, different RGB and LAB values.

Bruce Lindbloom, <http://www.bruceindbloom.com/>

Also, there are dozens of ColorCheckers online. Most give no color values. Many that do are wrong: the simplest explanation is that when creating a JPG, or with each compress/save–decompress/open cycle, there are small shifts in color that accumulate.

In a general sense, it is not important which ColorChecker you use except that this one is what CS used to print *CS Digital*. Therefore to compare how CS prints with the original, you *must* use this ColorChecker.

Following:

The following color bars were created in Photoshop using:

Settings: North American General Purpose 2

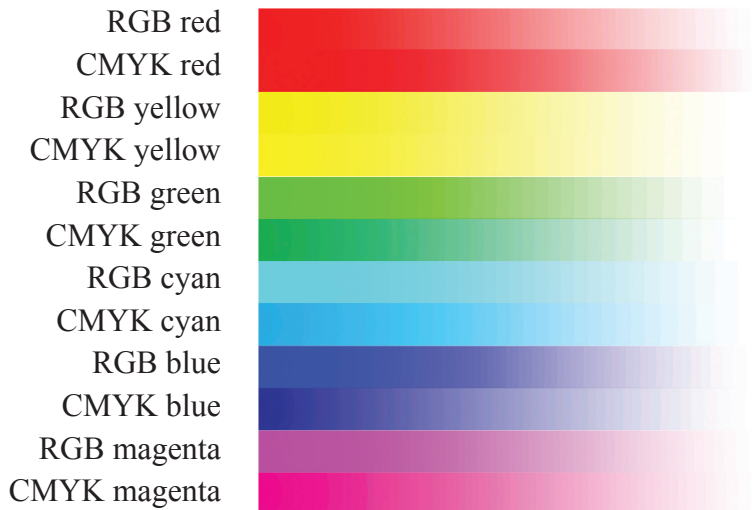
RGB: sRGB IEC61966-2.1

CMYK US Web Coated (SWOP) v2

These represent the basic, industry wide, versions of each color as Photoshop CS 3, US version, represent them. Compare them to what CS prints in *CS Digital*, page 35.

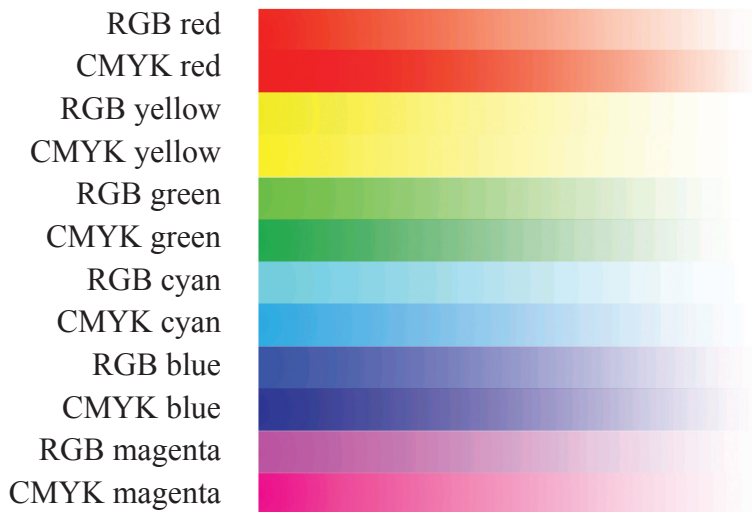
In this comparison, it is obvious that CS uses inks and profiles different from the industry standards.

RGB & CMYK



A

RGB & CMYK colors in
RGB
Photoshop



B

RGB & CMYK colors
converted to CMYK
Photoshop



C



Excerpted from *CS Digital*, © 2011 Walton Mendelson
All rights reserved.

All images are copyright to their respective photographers. No image is in public domain.
You have been given the limited, non-exclusive right to reproduce these pages on your printer for personal use as reference.

For additional information or permissions, contact
walton@12on14.com